



THE MONTAGU MONUMENTS

BOUGHTON ESTATE CHURCHES WITH MONUMENTS TO MEMBERS OF THE MONTAGU FAMILY

Members of the Montagu Family were buried, and often commemorated by contemporary monuments, in churches in two of the villages on the Boughton Estate.

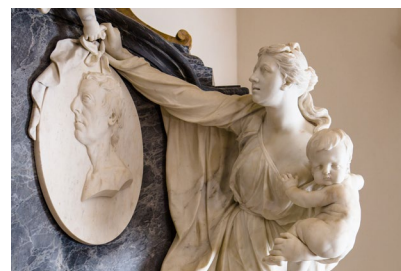
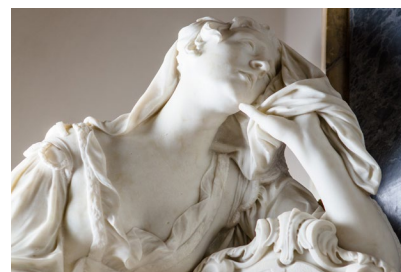
Montagu Monuments in the Church of St Mary the Virgin, Weekley

Boughton House stands within Weekley Parish and it is in the Church of St Mary the Virgin, Weekley, that the tombs and monuments to the first three generations of the Montagus of Boughton are found.

Montagu Monuments in St Edmund's Church, Warkton

With Saxon origins and Norman remains, St Edmund's Church in the village of Warkton, to the south of Boughton House, is distinguished by its Chancel, containing an exceptional grouping of four world-class monuments to the last three generations of the Montagu family of Boughton. It was designed and built, in 1751, by Louis François Roubiliac, the greatest sculptor active in England in the 18th century, to house his individual monuments to John, Duke of Montagu and his Duchess wife, Mary. The two other niches were subsequently filled by monuments to John and Mary's daughter and granddaughter.

In 2014 – 2015 the Montagu Monuments Conservation Project undertook major works to all four of the principal monuments in St Edmund's Church, Warkton, to secure and protect them from damage caused, possibly, by over zealous cleaning in the past and by environmental issues, including pollution and high humidity levels. These monuments have now been secured and restored to their former glory.



St Edmund's Church
Warkton NN16 9XH

Please use the car park by the Village Hall in Warkton.

The Church of St Mary the Virgin
Weekley NN16 9UW

Please park with consideration in this conservation area.

VISITING
For opening dates and times please ask a member of staff
or see
blht.org/montagu-monuments-2/visiting/

Opening times may be subject to change at short notice subject to Parish commitments. No charge is made for admission to the individual Churches, but donations towards their support are welcomed.



This Montagu Monuments Conservation Project is enabled by generous assistance from:
The Heritage Lottery Fund; The Buccleuch Living Heritage Trust; The PCC of St Edmund's Church; Finnis Scott Foundation; The Georgian Group; Northamptonshire Historic Churches Trust; The Ironmongers Guild; and other generous supporters.

